

E♭

Leadsheet You fly with me



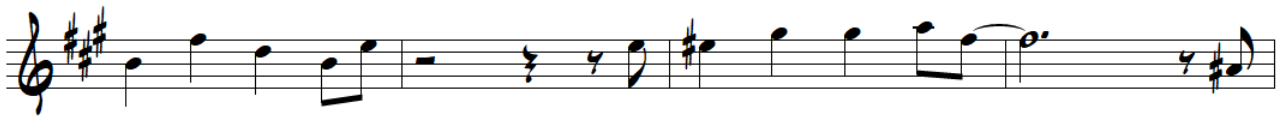
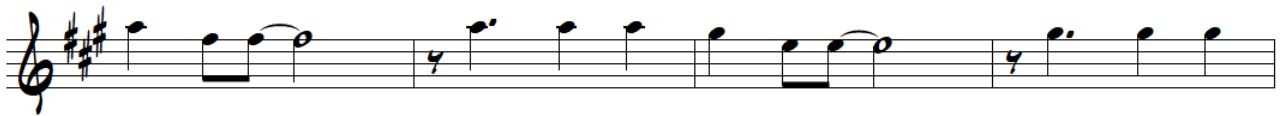
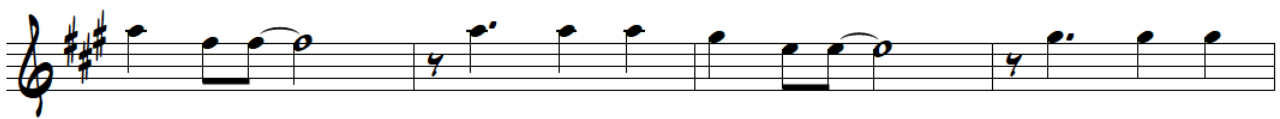
Jazz und
Improvisierte
Musik in
die Schule!

Bossa

Intro



Thema



(last time: to Coda)

Solo

Chord progression for the Solo section in E major (three sharps):

- Line 1: F#m7, Bm7, E7, Amaj7
- Line 2: Dmaj7, G#m7b5, C#7, F#m7
- Line 3: Bm7, E7, Amaj7, C#m7, F#7
- Line 4: Bm7, E7, Amaj7, C#7
- Line 5: F#m7, Bm7, E7, Amaj7
- Line 6: Dmaj7, G#m7b5, C#7, F#m7
- Line 7: Bm7, E7, C#7, F#7
- Line 8: Bm7, E7, Amaj7, G#m7b5, C#7

Vamp

Vamp section in E major (three sharps):

- Line 1: Four measures of whole rests.
- Line 2: Melodic line for the vamp: E4, E4, F#4, E4, D4, C#4, B3, A3, G#3, F#3, E3, D3, C#3, B2, A2, G#2, F#2, E2.

-> Thema & Coda

Coda

Coda section in E major (three sharps):

- Line 1: Melodic line for the coda: E4, E4, F#4, E4, D4, C#4, B3, A3, G#3, F#3, E3, D3, C#3, B2, A2, G#2, F#2, E2.